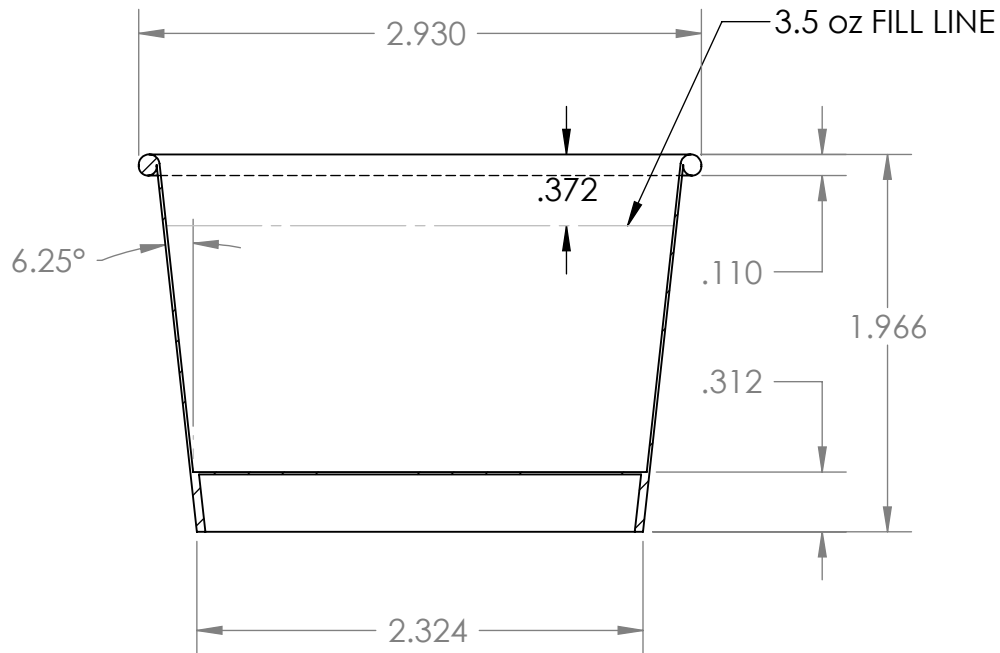

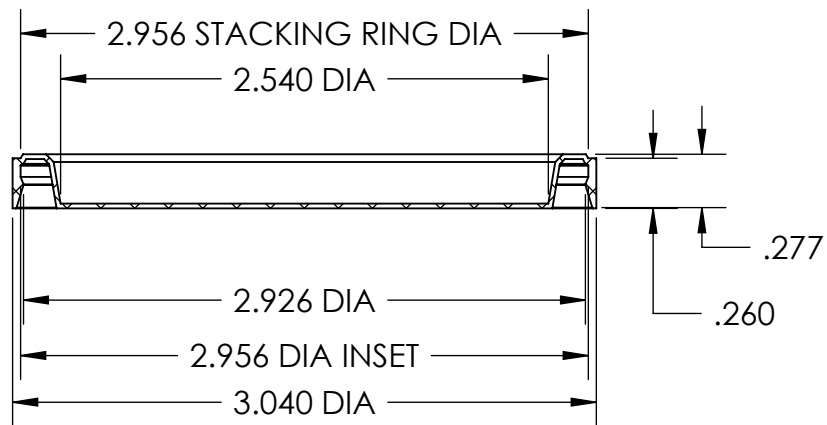
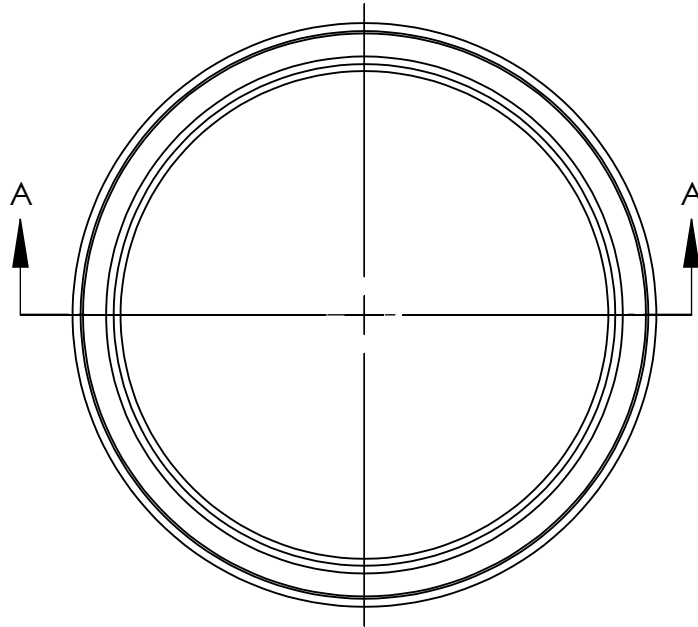


Cup Properties

Maximum Fill Volume	4.67 oz / 138 ml
Practical Volume	3.50 oz / 104 ml
Stack Height	17.25" / 50 Cups
Sidewall Material 12.2 PT, Polycoated 2 Sides - 3/4 X 1/2 mm	
Bottom Material 11.3 PT, Polycoated 2 Sides - 3/4 X 1/2 mm	



PROPRIETARY AND CONFIDENTIAL		DWG #:	 www.stanpacnet.com	SIZE	REV
The information contained in this drawing is the sole property of Stanpac Inc. Any reproduction in part or as a whole without the express written consent of Stanpac Inc is strictly prohibited.		10035100		A	*
UNLESS OTHERWISE SPECIFIED: All Dimensions in Inches Tolerances as follows: Fractional ±1/16" Decimal X.X" ±0.02" X.XX" ±0.01" X.XXX" ±0.005" Angular Dimensions ± 0.5°	DATE:	MATERIAL:	3.5 oz / 104 ml Cup		
	7/31/2009	-----			
	DRAWN BY:	TITLE:	SCALE: 1:1		
Jon Heida	-----				
USED ON:	SHEET 1 OF 1				



SECTION A-A

PROPRIETARY AND CONFIDENTIAL

The information contained in this drawing is the sole property of Stanpac Inc. Any reproduction in part or as a whole without the express written consent of Stanpac Inc is strictly prohibited.

UNLESS OTHERWISE SPECIFIED:

All Dimensions in Inches
 Tolerances as follows:
 Fractional $\pm 1/16$ "
 Decimal X.X" ± 0.02 "
 X.XX" ± 0.01 "
 X.XXX" ± 0.005 "
 Angular Dimensions $\pm 0.5^\circ$

DATE: 7/14/2009
 DRAWN BY: Jon Heida
 USED ON: -----

DWG #: 20030300
 MATERIAL: -----



www.stanpacnet.com

TITLE: 75 mm Molded Plug Lid

SIZE	REV
A	*
SCALE: 1:1	
SHEET 1 OF 1	