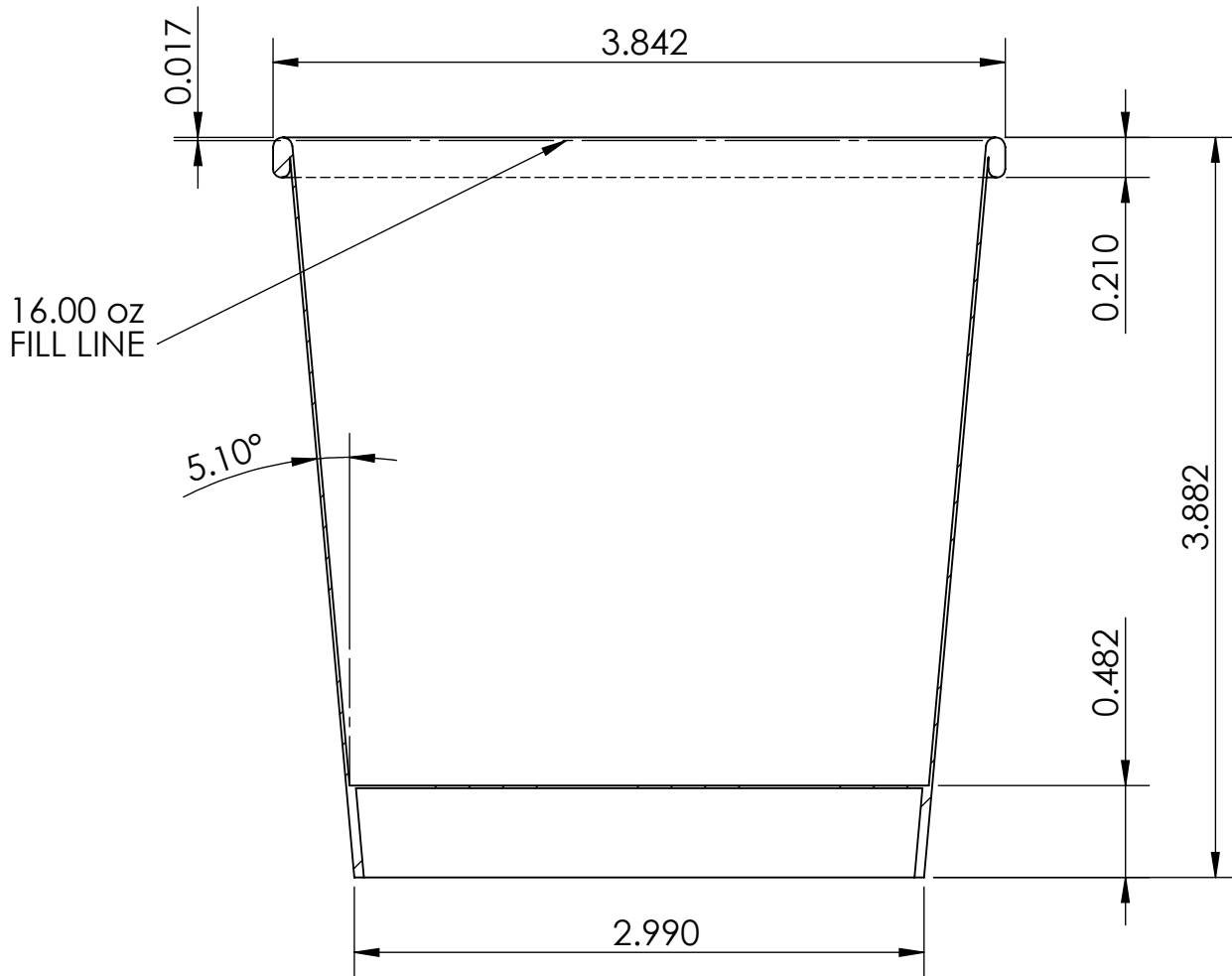

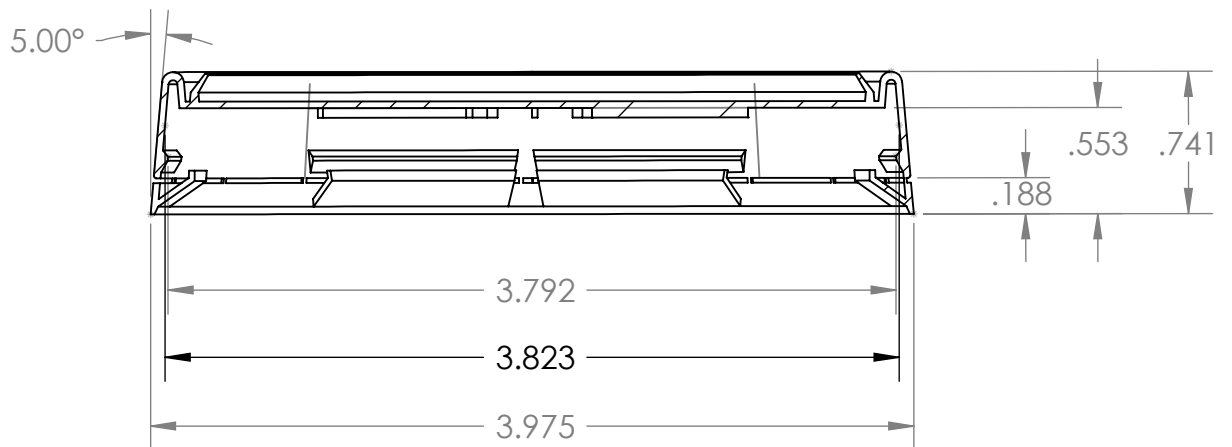
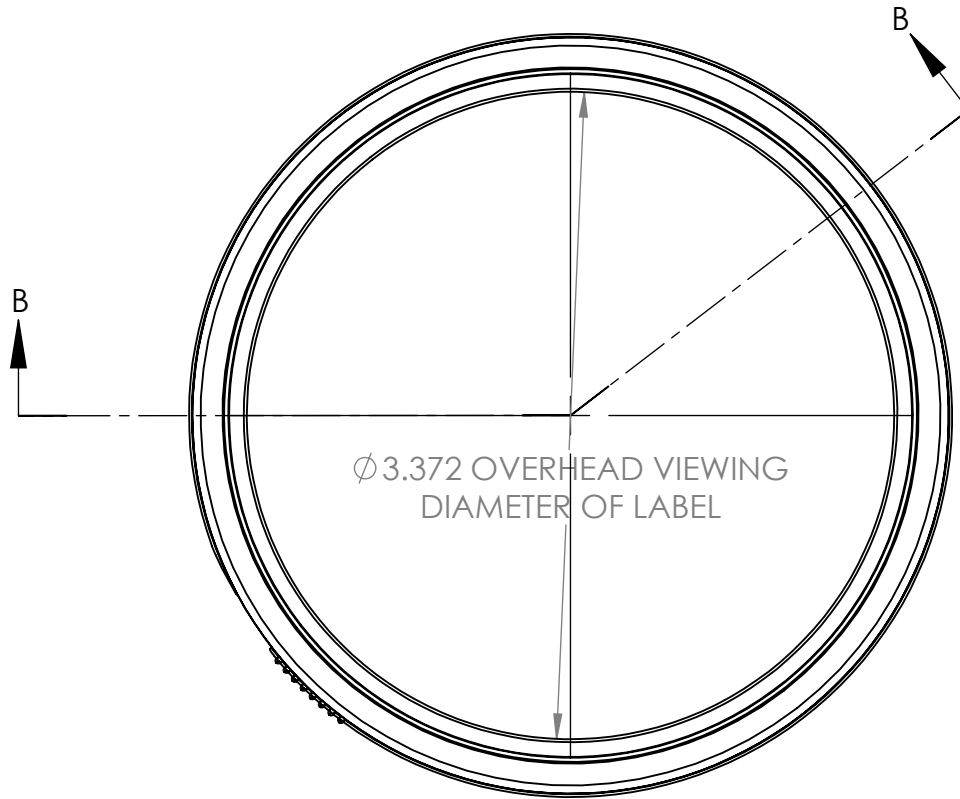


## Cup Properties

Maximum Fill Volume	16.1 oz / 476 ml
Practical Volume	16.0 oz / 473 ml
Stack Height	27.5" / 50 Cups
Sidewall Material 18 PT, Polycoated 2 Sides - 3/4 X 1/2 mm	
Bottom Material 13.3 PT, Polycoated 2 Sides - 3/4 X 1/2 mm	



<p><b>PROPRIETARY AND CONFIDENTIAL</b></p> <p>The information contained in this drawing is the sole property of Stanpac Inc. Any reproduction in part or as a whole without the express written consent of Stanpac Inc is strictly prohibited.</p> <p><b>UNLESS OTHERWISE SPECIFIED:</b></p> <p>All Dimensions in Inches  Tolerances as follows:  Fractional ±1/16"  Decimal X.X" ±0.02"  X.XX" ±0.01"  X.XXX" ±0.005"  Angular Dimensions ± 0.5°</p>	DWG #: <b>10160100</b>	 <a href="http://www.stanpacnet.com">www.stanpacnet.com</a>	SIZE <b>A</b>	REV *
	DATE: 7/31/2009		MATERIAL: -----	TITLE: <b>Pint, 16 oz / 473 ml Cup</b>



SECTION B-B

<p><b>PROPRIETARY AND CONFIDENTIAL</b></p> <p>The information contained in this drawing is the sole property of Stanpac Inc. Any reproduction in part or as a whole without the express written consent of Stanpac Inc is strictly prohibited.</p>	DWG #:	 <p>www.stanpacnet.com</p>	SIZE	REV
	20160200		MATERIAL:	<b>A</b>
<p><b>UNLESS OTHERWISE SPECIFIED:</b></p> <p>All Dimensions in Inches  Tolerances as follows:  Fractional ±1/16"  Decimal X.X" ±0.02"  X.XX" ±0.01"  X.XXX" ±0.005"  Angular Dimensions ± 0.5°</p>	DATE: 7/28/2009	TITLE:	SCALE: 1:1	SHEET 1 OF 1
	DRAWN BY: Jon Heida	<p>Secure Tec 100, Tamper Evident  Pint Lid - 100 mm</p>		
	USED ON:			