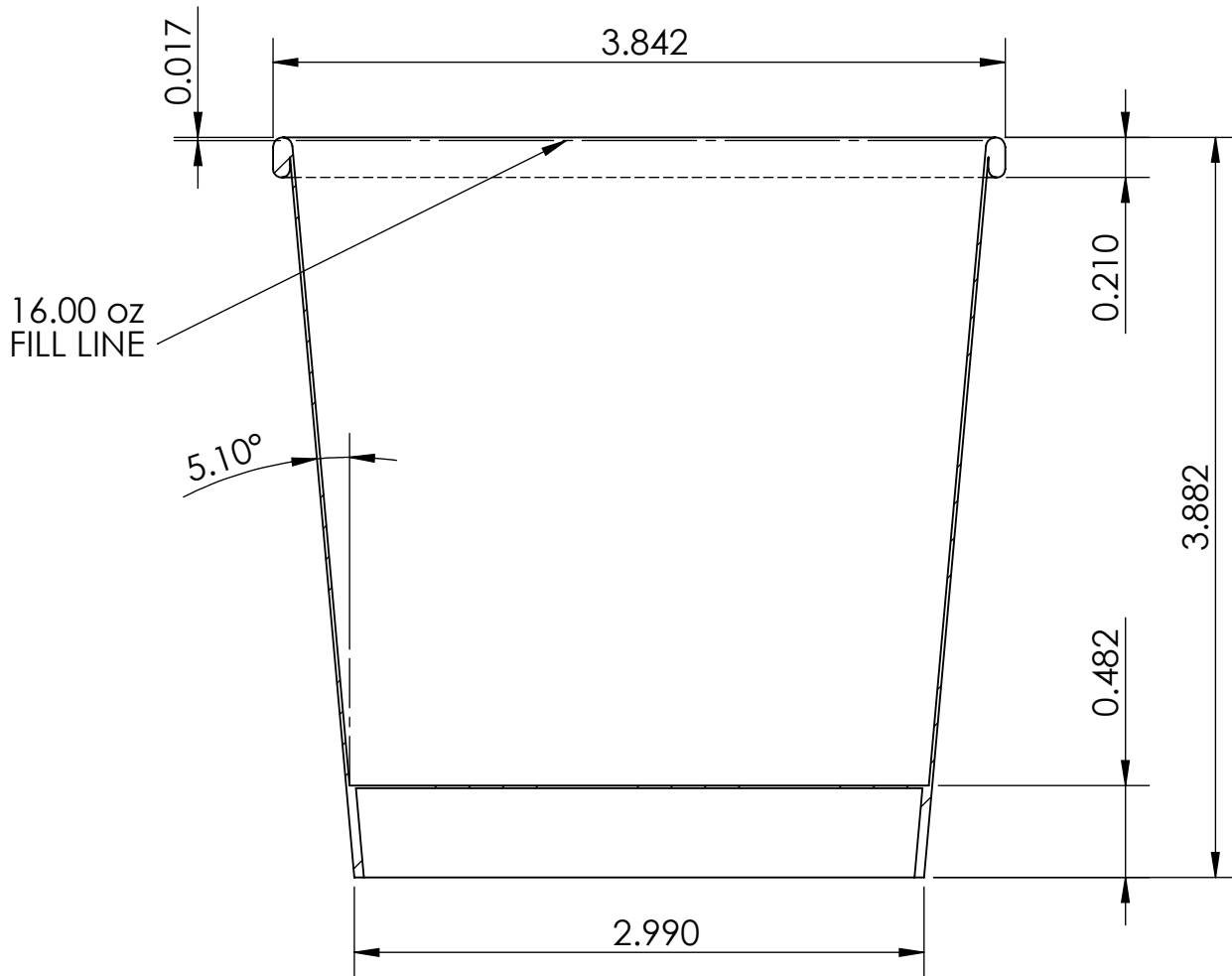



## Cup Properties

Maximum Fill Volume	16.1 oz / 476 ml
Practical Volume	16.0 oz / 473 ml
Stack Height	27.5" / 50 Cups
Sidewall Material 18 PT, Polycoated 2 Sides - 3/4 X 1/2 mm	
Bottom Material 13.3 PT, Polycoated 2 Sides - 3/4 X 1/2 mm	

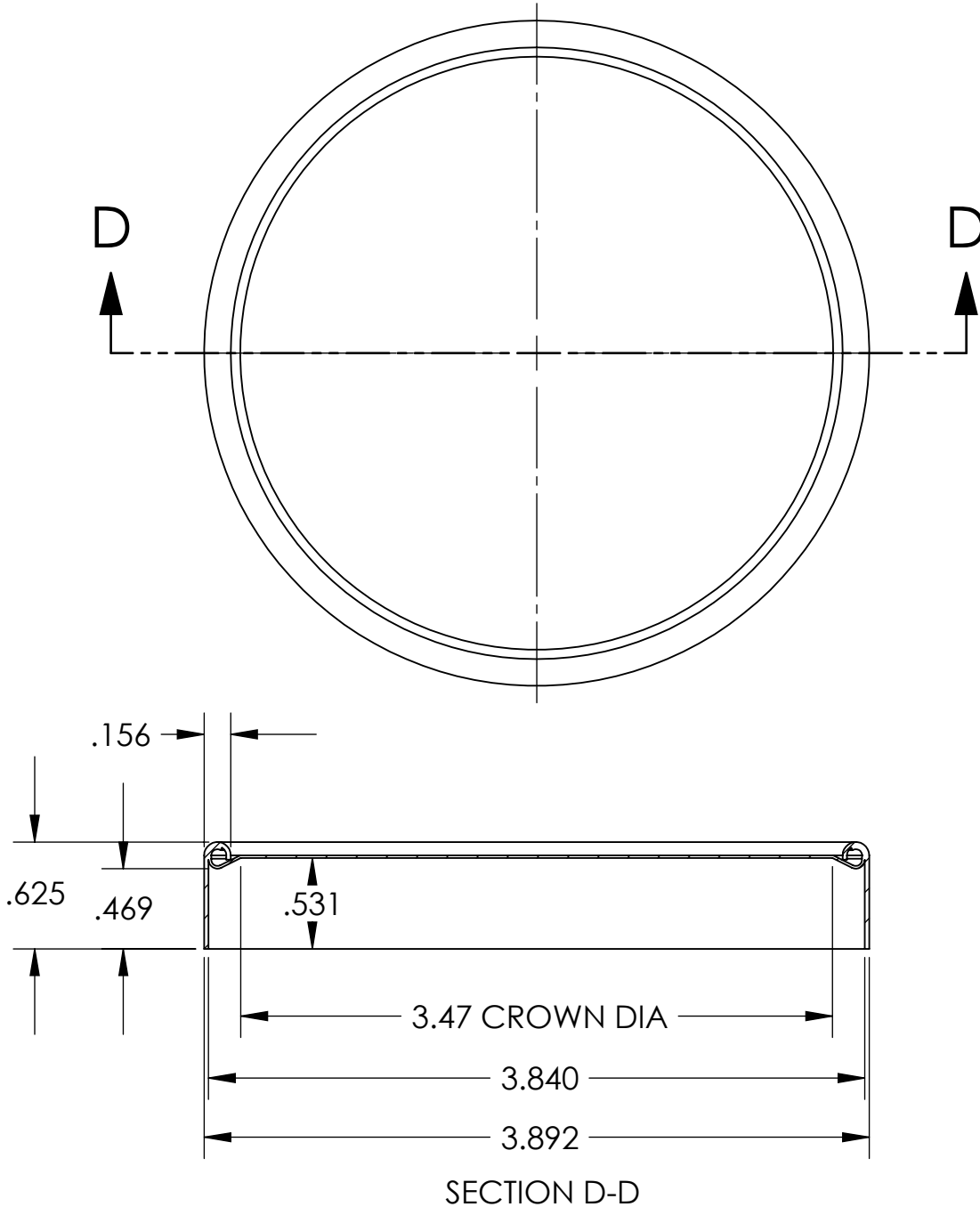


<p><b>PROPRIETARY AND CONFIDENTIAL</b></p> <p>The information contained in this drawing is the sole property of Stanpac Inc. Any reproduction in part or as a whole without the express written consent of Stanpac Inc is strictly prohibited.</p> <p><b>UNLESS OTHERWISE SPECIFIED:</b></p> <p>All Dimensions in Inches  Tolerances as follows:  Fractional ±1/16"  Decimal X.X" ±0.02"  X.XX" ±0.01"  X.XXX" ±0.005"  Angular Dimensions ± 0.5°</p>	DWG #: <b>10160100</b>	 <a href="http://www.stanpacnet.com">www.stanpacnet.com</a>	SIZE <b>A</b>	REV *
	DATE: 7/31/2009		MATERIAL: -----	TITLE: <b>Pint, 16 oz / 473 ml Cup</b>

### Lid Properties

Disc Material 16 PT, Polycoated 1 Side 3/4 mm

Tube Material 11.3 PT, Uncoated



**PROPRIETARY AND CONFIDENTIAL**

The information contained in this drawing is the sole property of Stanpac Inc. Any reproduction in part or as a whole without the express written consent of Stanpac Inc is strictly prohibited.

**UNLESS OTHERWISE SPECIFIED:**

All Dimensions in Inches  
 Tolerances as follows:  
 Fractional  $\pm 1/16$ "  
 Decimal X.X"  $\pm 0.02$ "  
 X.XX"  $\pm 0.01$ "  
 X.XXX"  $\pm 0.005$ "  
 Angular Dimensions  $\pm 0.5^\circ$

DATE: 7/31/2009

DRAWN BY: Jon Heida

USED ON: \_\_\_\_\_

DWG #: 20160100  
 MATERIAL: \_\_\_\_\_

TITLE: Pint, 16 oz Spiral Wound Lid



SIZE	REV
<b>A</b>	*
SCALE: 1:1	
SHEET 1 OF 1	